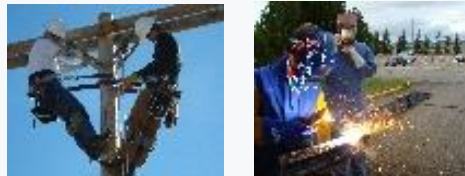




HIGHLANDS COLLEGE

PREVIEW OF OUR INSTITUTION



VIDEOS

WATCH NOW ▶

WATCH NOW ▶

OVERVIEW

CONTACT US FOR MORE INFORMATION

|

ADDRESS

| 25 Basin Creek,
Butte, MT 59701 United States

PHONE |

WEBSITE | <http://www.mtech.edu>

ENROLLMENT | 850 Students

TYPE OF INSTITUTION |

- Public 2-Year

APPLICATION FEE | \$30

IN-STATE TUITION (*Per Credit*) | \$

IN-STATE TUITION COST (*Per Year*) | \$3568

OUT-OF-STATE TUITION (*Per Credit*) | \$

OUT-OF-STATE TUITION (*Per Year*) | \$8973

BOOKS & SUPPLIES COST (*Per Year*) | \$1100

ROOM & BOARD COST (*Per Year*) | \$9828

STUDENT : FACULTY RATIO | 12:1

PRIORITY APPLICATION DEADLINE |

PRIORITY FINANCIAL AID DEADLINE |

HIGHLANDS COLLEGE

Contact Us For More Information!

<http://www.mtech.edu> |

PREPARE FOR THE COLLEGE FAIR

WHICH MONTANA FAIRS ARE WE ATTENDING? |

- EASTERN MONTANA REGION FAIRS
- CENTRAL MONTANA REGION FAIRS
- WESTERN MONTANA REGION FAIRS

ASK US ABOUT OUR TOP 3 ACADEMIC DEPARTMENTS |

ASK OUR REPRESENTATIVE AT THE FAIR THIS QUESTION |

ADDITIONAL CAMPUS INFORMATION

ADMISSIONS INFORMATION | <http://www.mtech.edu>

FINANCIAL AID INFORMATION | <http://www.mtech.edu>

SCHOLARSHIP INFORMATION | <http://www.mtech.edu>

ACADEMIC PROGRAMS LISTING | <http://www.mtech.edu>

EXTRACURRICULAR ACTIVITIES | <http://www.mtech.edu>

SOCIAL MEDIA

FACEBOOK | <https://www.facebook.com/mtech.edu>

TWITTER | <https://www.twitter.com/mtech.edu>

YOUTUBE | <https://www.youtube.com/mtech.edu>

INSTAGRAM | <https://www.instagram.com/mtech.edu>